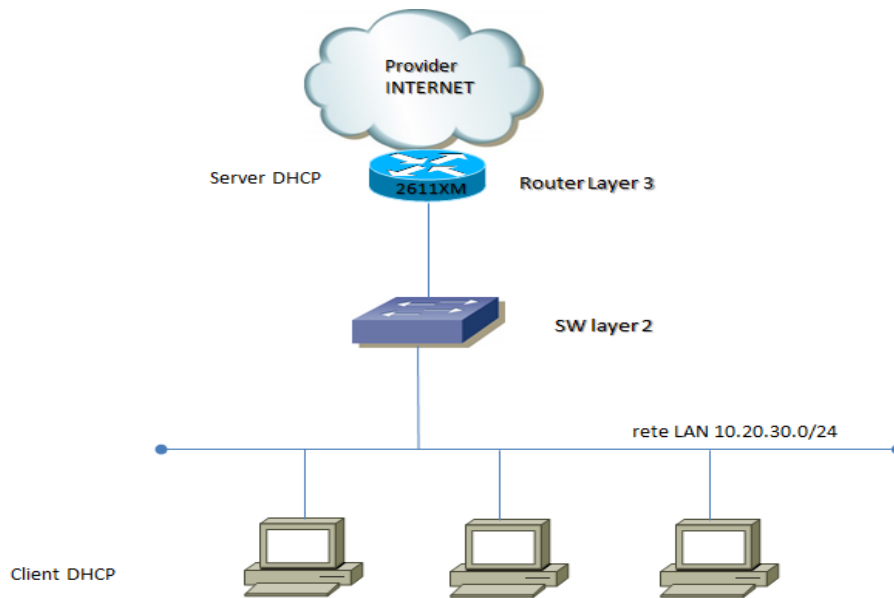


Questo documento mette in evidenza una configurazione client server DHCP con un router Cisco 2611.



Configuration Router Layer 3:

```

no ip dhcp use vrf connected
ip dhcp excluded-address 10.20.30.1 10.20.30.100
!
ip dhcp pool 10
  import all
  network 10.20.30.0 255.255.255.0
  default-router 10.20.30.1
  domain-name PIPPO
  dns-server A.B.C.11
  netbios-node-type b-node
  lease 3
!
interface FastEthernet0/1.10
  description <dhcp client>
  encapsulation dot1Q 10
  ip address 10.20.30.1 255.255.255.0
  ip virtual-reassembly
!
    
```