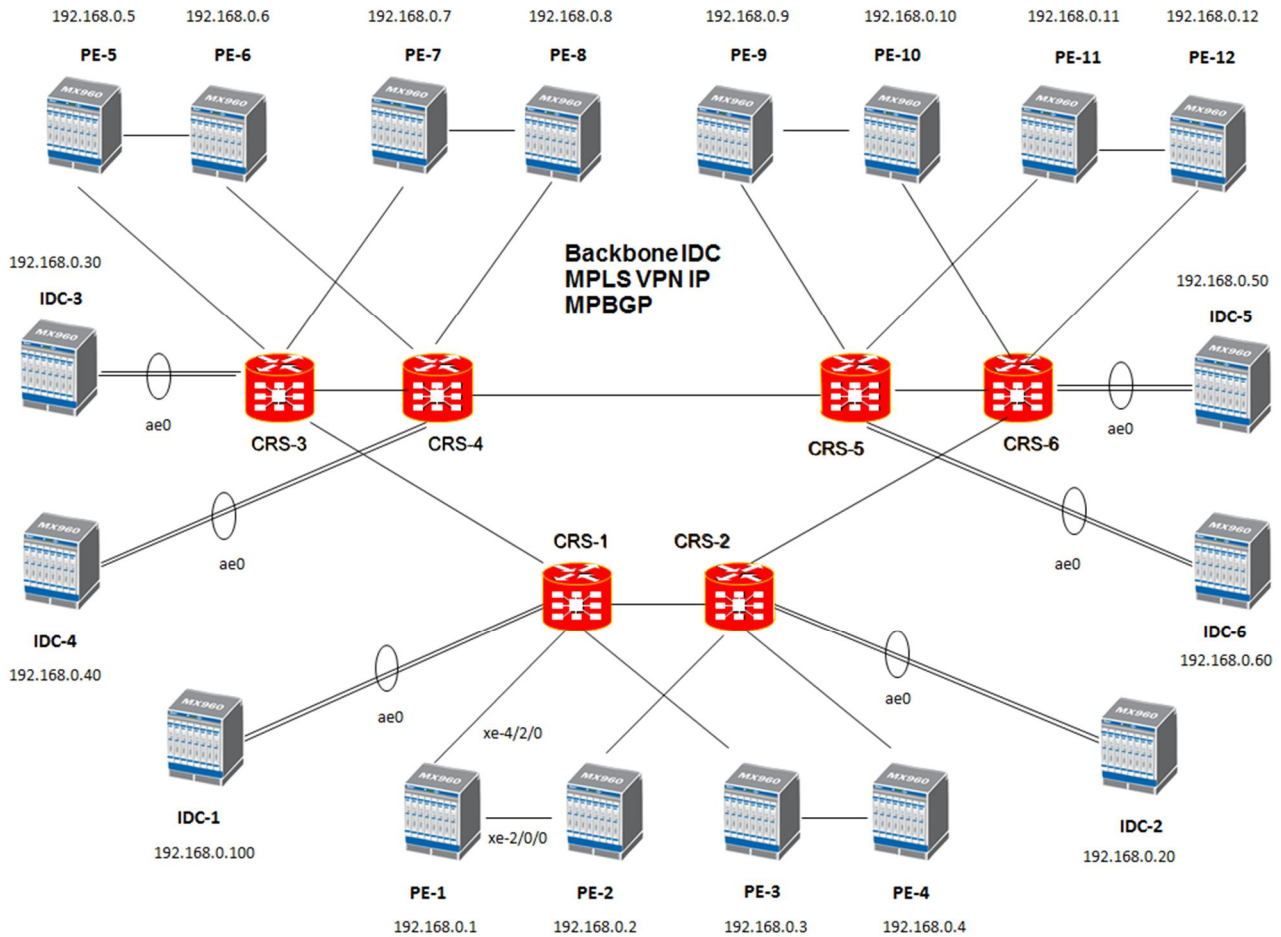


Il presente documento mette in evidenza una configurazione mpls TE label-switched-path + rsvp + ospf di un router PE MX960 Juniper, all'interno di un backbone come in figura:



### CONFIGURAZIONE MPLS TE RSVP OSPF PE-1

```

protocols {
  rsvp {
    interface xe-4/2/0.0;
    interface xe-2/0/0.0 {
      link-protection;
    }
  }
}
    
```

```
mpls {  
  icmp-tunneling;  
  optimize-timer 30;  
}  
  
label-switched-path MPLS-PE1_to-IDC2 {  
  to 192.168.0.20;  
  node-link-protection;  
  fast-reroute;  
}  
  
label-switched-path MPLS-PE1_to-IDC1 {  
  to 192.168.0.100;  
  node-link-protection;  
  fast-reroute;  
}  
  
label-switched-path MPLS-PE1_to-IDC3 {  
  to 192.168.0.30;  
  node-link-protection;  
  fast-reroute;  
}  
  
label-switched-path MPLS-PE1_to-IDC4 {  
  to 192.168.0.40;  
  node-link-protection;  
  fast-reroute;  
}  
  
label-switched-path MPLS-PE1_to-IDC5 {  
  to 192.168.0.50;  
  node-link-protection;  
  fast-reroute;  
}
```

```
label-switched-path MPLS-PE1_to-IDC6 {  
  to 192.168.0.60;  
  node-link-protection;  
  fast-reroute;  
}
```

```
label-switched-path MPLS-PE1_to-PE2 {  
  to 192.168.0.2;  
  node-link-protection;  
  fast-reroute;  
}
```

```
label-switched-path MPLS-PE1_to-PE5 {  
  to 192.168.0.5;  
  node-link-protection;  
  fast-reroute;  
}
```

```
label-switched-path MPLS-PE1_to-PE6 {  
  to 192.168.0.6;  
  node-link-protection;  
  fast-reroute;  
}
```

```
label-switched-path MPLS-PE1_to-PE7 {  
  to 192.168.0.7;  
  node-link-protection;  
  fast-reroute;  
}
```

```
label-switched-path MPLS-PE1_to-PE8 {  
  to 192.168.0.8;  
  node-link-protection;  
  fast-reroute;
```

```
}  
label-switched-path MPLS-PE1_to-PE9 {  
    to 192.168.0.9;  
    node-link-protection;  
    fast-reroute;  
}  
label-switched-path MPLS-PE1_to-PE10 {  
    to 192.168.0.10;  
    node-link-protection;  
    fast-reroute;  
}  
label-switched-path MPLS-PE1_to-PE11 {  
    to 192.168.0.11;  
    node-link-protection;  
    fast-reroute;  
}  
label-switched-path MPLS-PE1_to-PE12 {  
    to 192.168.0.12;  
    node-link-protection;  
    fast-reroute;  
}  
label-switched-path MPLS-PE1_to-PE3 {  
    to 192.168.0.3;  
    node-link-protection;  
    fast-reroute;  
}  
label-switched-path MPLS-PE1_to-PE4 {  
    to 192.168.0.4;  
    node-link-protection;
```

```
    fast-reroute;
}

interface xe-4/2/0.0;

interface xe-2/0/0.0;
}

ospf {
  traffic-engineering;
  reference-bandwidth 10g;
  area 0.0.0.0 {
    interface lo0.0 {
      passive;
    }
    interface xe-4/2/0.0;
    interface xe-2/0/0.0;
  }
}
```