

Sulla base della architettura in figura 1, il presente documento si propone di indicare la configurazione **policy-option** su router Juniper M7i ed i PE (MX960)

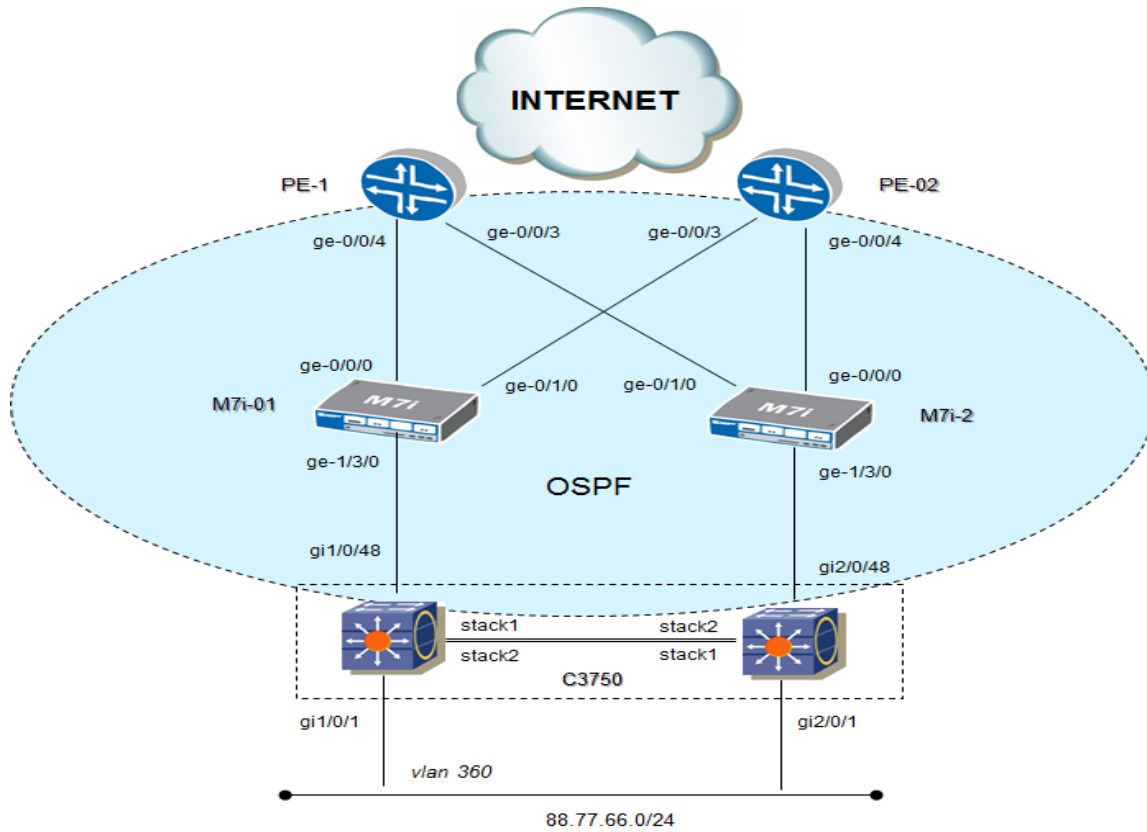


Figura 1: architettura di rete

L'obiettivo policy-option è:

- **M7i:**
 - export only default route
 - reject all network
- **PE:**
 - Import la network vlan 360 subnet a.b.c.0/24
 - Reject all network (default route, management ed altro)
- **Protocollo di routing:**
 - OSPF di redistribuzione network tra router PE e C3750, attraverso i router M7i

OSPF garantisce:

- ✓ La redistribuzione della rete vlan 360
- ✓ Scelta per miglior percorso (SPF)
- ✓ Bilanciamento del traffico

CONFIGURAZIONE ROUTER PE:

```

PE-1 (MX960)
set interfaces ge-0/0/3 description "to M7i-02"
set interfaces ge-0/0/3 unit 0 family inet address 1.2.3.246/30
set interfaces ge-0/0/4 description "to M7i-01"
set interfaces ge-0/0/4 unit 0 family inet address 1.2.3.234/30
!
set routing-instances INTERNET interface ge-0/0/3.0
set routing-instances INTERNET interface ge-0/0/4.0
!
set routing-instances INTERNET protocols ospf import NO-DEFAULT-M7i
set routing-instances INTERNET protocols ospf reference-bandwidth 10g
set routing-instances INTERNET protocols ospf area 0.0.0.0 interface ge-0/0/3.0
set routing-instances INTERNET protocols ospf area 0.0.0.0 interface ge-0/0/4.0
!
set policy-options policy-statement NO-DEFAULT-M7i term 1 from protocol ospf
set policy-options policy-statement NO-DEFAULT-M7i term 1 from route-filter 0.0.0.0/0 exact
set policy-options policy-statement NO-DEFAULT-M7i term 1 from route-filter altro traffico exact
set policy-options policy-statement NO-DEFAULT-M7i term 1 then reject
set policy-options policy-statement NO-DEFAULT-M7i then accept

N.B. per altro traffic si intende traffic dati, di management senza includere la network a.b.c.0/24
    
```

```

PE-02 (MX960)
set interfaces ge-0/0/3 description "to M7i-01"
set interfaces ge-0/0/3 unit 0 family inet address 1.2.3.238/30
set interfaces ge-0/0/4 description "to M7i-02"
set interfaces ge-0/0/4 unit 0 family inet address 1.2.3.242/30
!
set routing-instances INTERNET interface ge-0/0/3.0
set routing-instances INTERNET interface ge-0/0/4.0
!
set routing-instances INTERNET protocols ospf import NO-DEFAULT-M7i
set routing-instances INTERNET protocols ospf reference-bandwidth 10g
set routing-instances INTERNET protocols ospf area 0.0.0.0 interface ge-0/0/3.0
set routing-instances INTERNET protocols ospf area 0.0.0.0 interface ge-0/0/4.0
!
set policy-options policy-statement NO-DEFAULT-M7i term 1 from protocol ospf
set policy-options policy-statement NO-DEFAULT-M7i term 1 from route-filter 0.0.0.0/0 exact
set policy-options policy-statement NO-DEFAULT-M7i term 1 from route-filter altro traffico exact
set policy-options policy-statement NO-DEFAULT-M7i term 1 then reject
set policy-options policy-statement NO-DEFAULT-M7i then accept

N.B. per altro traffic si intende traffic dati, di management senza includere la network a.b.c.0/24
    
```

CONFIGURAZIONE ROUTER M7i:

M7i-01

```

set interfaces ge-1/3/0 unit 0 description "to C3750"
set interfaces ge-1/3/0 unit 0 family inet address 1.2.3.226
set interfaces ge-0/0/0 unit 0 description "to PE-01"
set interfaces ge-0/0/0 unit 0 family inet address 1.2.3.233/30
set interfaces ge-0/1/0 unit 0 description "to PE-02"
set interfaces ge-0/1/0 unit 0 family inet address 1.2.3.237/30
!
set routing-options static route 0.0.0.0/0 next-hop 1.2.3.234
set routing-options static route 0.0.0.0/0 next-hop 1.2.3.238
!
set protocols ospf export default
set protocols ospf area 0.0.0.0 interface ge-1/3/0.0
set protocols ospf area 0.0.0.0 interface ge-0/0/0.0
set protocols ospf area 0.0.0.0 interface ge-0/1/0.0
!
set policy-options policy-statement default term 1 from protocol static
set policy-options policy-statement default term 1 from route-filter altro traffico exact
set policy-options policy-statement default term 1 then reject
set policy-options policy-statement default then accept

```

N.B. per altro traffic si intende traffic dati, di management senza includere la network a.b.c.0/24

M7i-02

```

set interfaces ge-1/3/0 unit 0 description "to C3750"
set interfaces ge-1/3/0 unit 0 family inet address 10.31.104.230
set interfaces ge-0/0/0 unit 0 description "to PE-02"
set interfaces ge-0/0/0 unit 0 family inet address 10.31.104.241/30
set interfaces ge-0/1/0 unit 0 description "to PE-01"
set interfaces ge-0/1/0 unit 0 family inet address 10.31.104.245/30
!
set routing-options static route 0.0.0.0/0 next-hop 10.31.104.242
set routing-options static route 0.0.0.0/0 next-hop 10.31.104.246
set routing-options static route 10.0.0.0/24 next-hop 10.31.10.1
!
set protocols ospf export default
set protocols ospf area 0.0.0.0 interface ge-1/3/0.0
set protocols ospf area 0.0.0.0 interface ge-0/0/0.0
set protocols ospf area 0.0.0.0 interface ge-0/1/0.0
!
set policy-options policy-statement default term 1 from protocol static
set policy-options policy-statement default term 1 from route-filter altro traffico exact
set policy-options policy-statement default term 1 then reject
set policy-options policy-statement default then accept

```

N.B. per altro traffic si intende traffic dati, di management senza includere la network a.b.c.0/24

CONFIGURAZIONE ROUTER C3750 CISCO:

C3750#

```
interface gi1/0/48
description "to M7i-01"
no switchport
ip address 1.2.3.225 255.255.255.252
!
interface gi2/0/48
description "to M7i-02"
no switchport
ip address 1.2.3.229 255.255.255.252
!
interface vlan360
description Network pubblico
ip address a.b.c.0 255.255.255.0
!
router ospf 10
router-id x.y.z.65
passive-interface default
no passive-interface gi1/0/48
no passive-interface gi2/0/48
network a.b.c.0 0.0.0.255 area 0
```