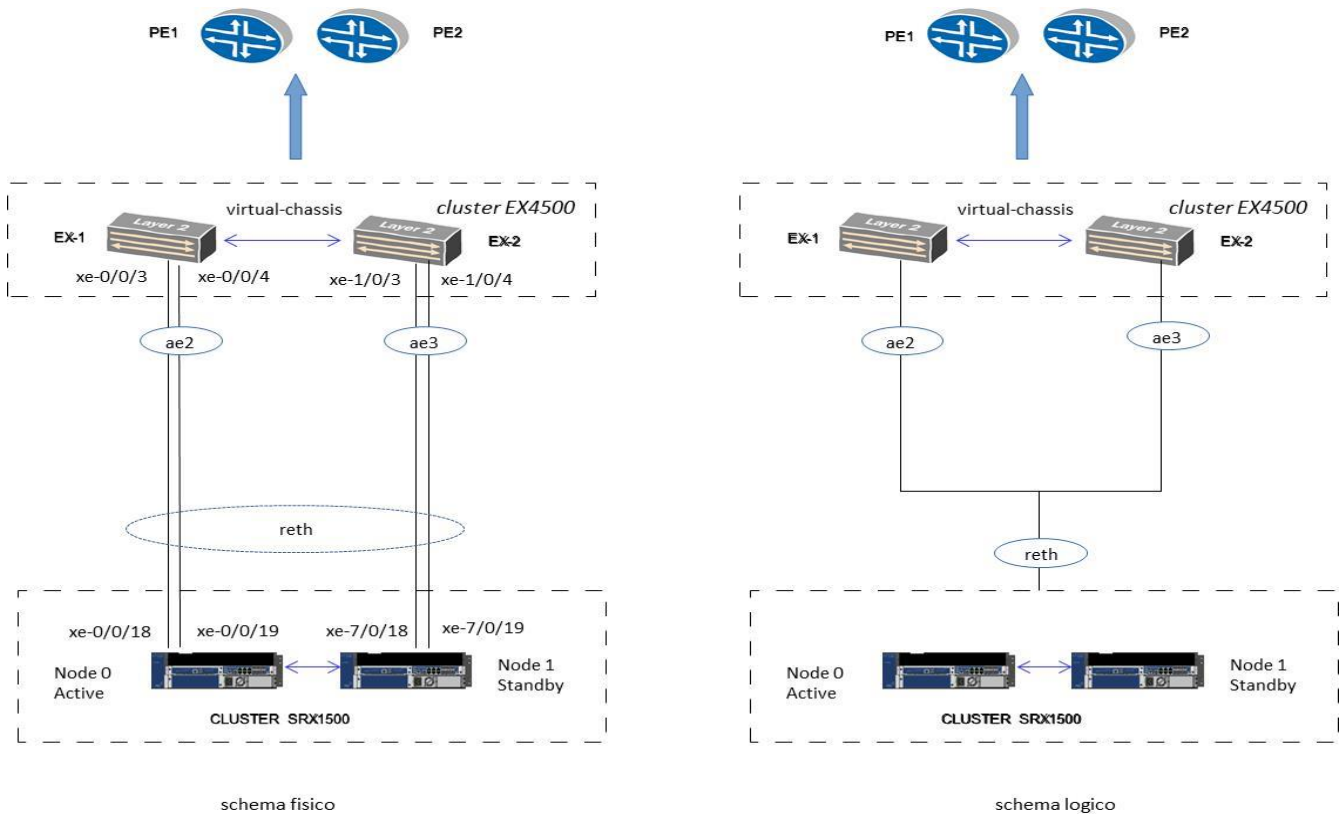


Collegamento tra SRX ed EX in cluster:



Redundant Port and Security zones:

```

EX virtual-switch
set interface xe-1/0/3 ether-option 802.3ad ae3
set interface xe-1/0/4 description "to SRX-1500 cluster Node1"
set interface xe-0/0/3 ether-option 802.3ad ae4
set interface xe-0/0/4 description "to SRX-1500 cluster Node0"
!
set interface ae3 aggregate-ether-option lacp active
set interface ae3 description "to SRX-1500 cluster Node1"
set interface ae3 unit 0 family ethernet-switching port-mode trunk
set interface ae3 unit 0 family ethernet-switching vlan members P2P_BGP_SRX_PE1
set interface ae3 unit 0 family ethernet-switching vlan members P2P_BGP_SRX_PE2
set interface ae3 unit 0 family ethernet-switching vlan members P2P_OSPF_SRX_PE1
set interface ae3 unit 0 family ethernet-switching vlan members P2P_OSPF_SRX_PE2
!
set interface ae4 aggregate-ether-option lacp active
set interface ae4 description "to SRX-1500 cluster Node0"
set interface ae4 unit 0 family ethernet-switching port-mode trunk
set interface ae4 unit 0 family ethernet-switching vlan members P2P_BGP_SRX_PE1
set interface ae4 unit 0 family ethernet-switching vlan members P2P_BGP_SRX_PE2
set interface ae4 unit 0 family ethernet-switching vlan members P2P_OSPF_SRX_PE1
set interface ae4 unit 0 family ethernet-switching vlan members P2P_OSPF_SRX_PE2

```

**Redundancy Interface:**

```
set interface xe-0/0/18 gigether-option redundant-parent reth1
set interface xe-0/0/19 gigether-option redundant-parent reth1
set interface xe-7/0/18 gigether-option redundant-parent reth1
set interface xe-7/0/19 gigether-option redundant-parent reth1
set interface reth1 description "aggregation EX"
set interface reth1 vlan-tagging
set interface reth1 redundant-ether-option redundancy-group 1
set interfaces reth1 redundant-ether-options lacp active
set interfaces reth1 redundant-ether-options lacp periodic slow
!
set interface reth1 unit 2 description P2P-OSPF-SRX-PE1
set interface reth1 unit 2 vlan-id 2
set interface reth1 unit 2 family inet address 2.2.2.26/30
!
set interface reth1 unit 3 description P2P-OSPF-SRX-PE2
set interface reth1 unit 3 vlan-id 3
set interface reth1 unit 3 family inet address 3.3.3.30/30
!
set interface reth1 unit 4 description P2P-BGP-SRX-PE1
set interface reth1 unit 4 vlan-id 4
set interface reth1 unit 4 family inet address 4.4.4.34/30
!
set interface reth1 unit 5 description P2P-BGP-SRX-PE2
set interface reth1 unit 5 vlan-id 5
set interface reth1 unit 5 family inet address 5.5.5.38/30
!
```

**Security Zone:**

```
set security zones security-zone trust host-inbound-traffic system-services all
set security zones security-zone trust host-inbound-traffic protocols all
set security zones security-zone trust interface reth1.2
set security zones security-zone trust interface reth1.3
!
set security zones security-zone untrust host-inbound-traffic system-services all
set security zones security-zone untrust host-inbound-traffic protocols all
set security zones security-zone untrust interface reth1.4
set security zones security-zone untrust interface reth1.4
!
```